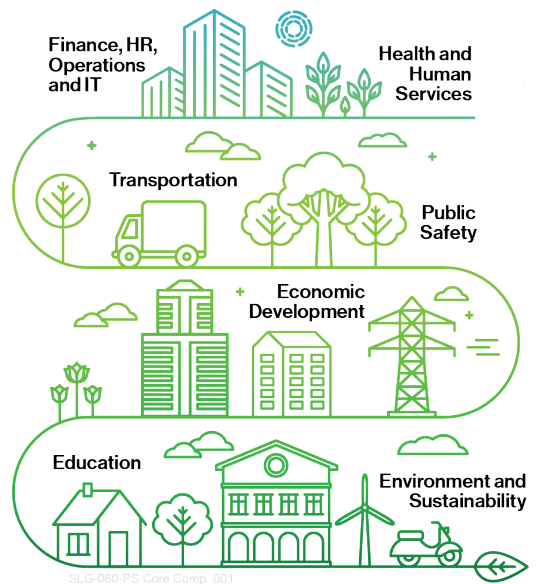


# Guidehouse's Commitment to Counties

Guidehouse's State & Local Government team specializes in helping local governments achieve long-term economic, environmental, social, and cultural prosperity.

Local government leaders make decisions every day that impact the way we live. Decisions about housing, transportation, education, sanitation, economic development, and labor are often enacted at the local level, impacting us daily in ways seen and unseen. We serve local leaders across a range of issues and are able to help tackle a myriad of emerging challenges.



## Our Service Offerings and Capabilities

Our capabilities range from strategy and operations consulting to technology implementation. We have worked with state and regional government entities to plan, execute, and evaluate solutions to tackle their toughest challenges.

We don't believe there's a one-solution-fits-all approach, and we work closely with our clients to tailor unique solutions that address their most pressing issues.

## About Guidehouse

Guidehouse is a leading global provider of consulting services to the public sector and commercial markets, with broad capabilities in management, technology, and risk consulting. By combining our public and private sector expertise, we help clients address their most complex challenges and navigate significant regulatory pressures, focusing on transformational change, business resiliency, and technology-driven innovation. Across a range of advisory, consulting, outsourcing, and digital services, we create scalable, innovative solutions that help our clients outwit complexity and position them for future growth and success. The company has more than 15,000 professionals in over 50 locations globally. Guidehouse is a Veritas Capital portfolio company, led by seasoned professionals with proven and diverse expertise in traditional and emerging technologies, markets, and agenda-setting issues driving national and global economies.

